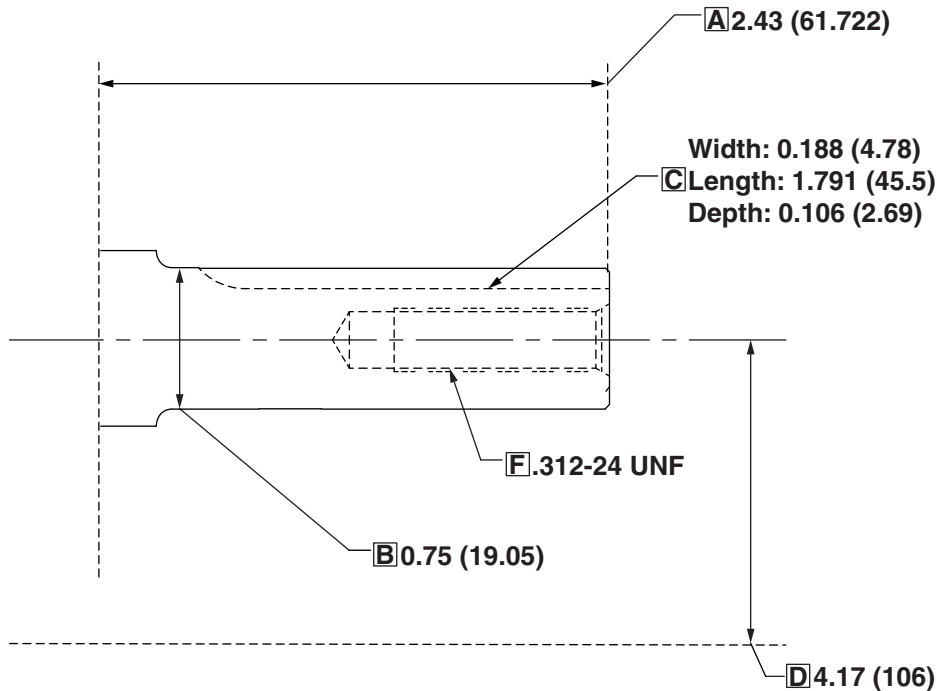


CRANKSHAFT SPECIFICATION SHEET

Part Number: 590617

Crankshaft Type: Straight



Ref.	Name	Dimension	Ref.	Name	Dimension
A	PTO Ext. Length	2.43 (61.722)	D	PTO Height	4.17 (106)
B	PTO Ext. Diameter	0.75 (19.05)	E	PTO Thread Type	Internal
C	PTO Key	Width: 0.188 (4.78) Length: 1.791 (45.5) Depth: 0.106 (2.69)	F	PTO Thread Size	.312-24 UNF

Unless otherwise noted, all measurements are given in "inches (mm)"

Measure PTO Extension Length as follows:

Horizontal Engines: Distance from oil seal/cover's mounting face to end of crankshaft.

Vertical Engines: Distance from mounting face of sump - not oil seal - to end of crankshaft.



COPYRIGHT by BRIGGS & STRATTON CORPORATION
 All rights reserved. No part of this material may be reproduced or transmitted, in any form or by any means, electronic or mechanical, including photocopying, recording or by any information storage and retrieval system, without permission in writing from Briggs & Stratton Corporation.

Issue Date: 04/06/2018

Uncontrolled document when printed. Refer to thepowerportal.com for latest version.